

7.3.3 What kind of quadrilateral is it?

7-138

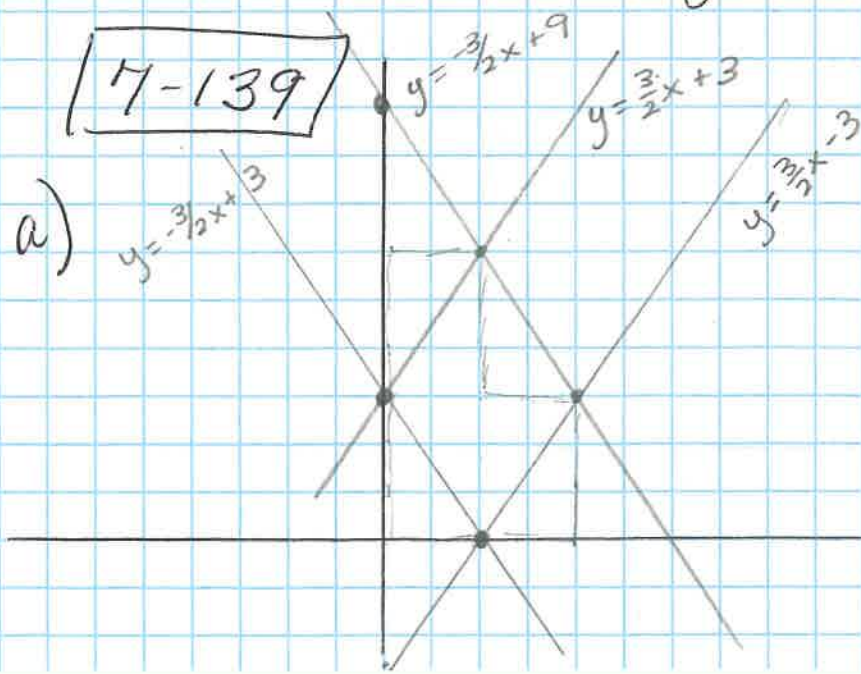
a) must be: rectangle
could be: square

b) must be: trapezoid
could be: parallelogram
rhombus
rectangle
square

c) must be: none

could be: rectangle
square

isosceles trapezoid
right trapezoid



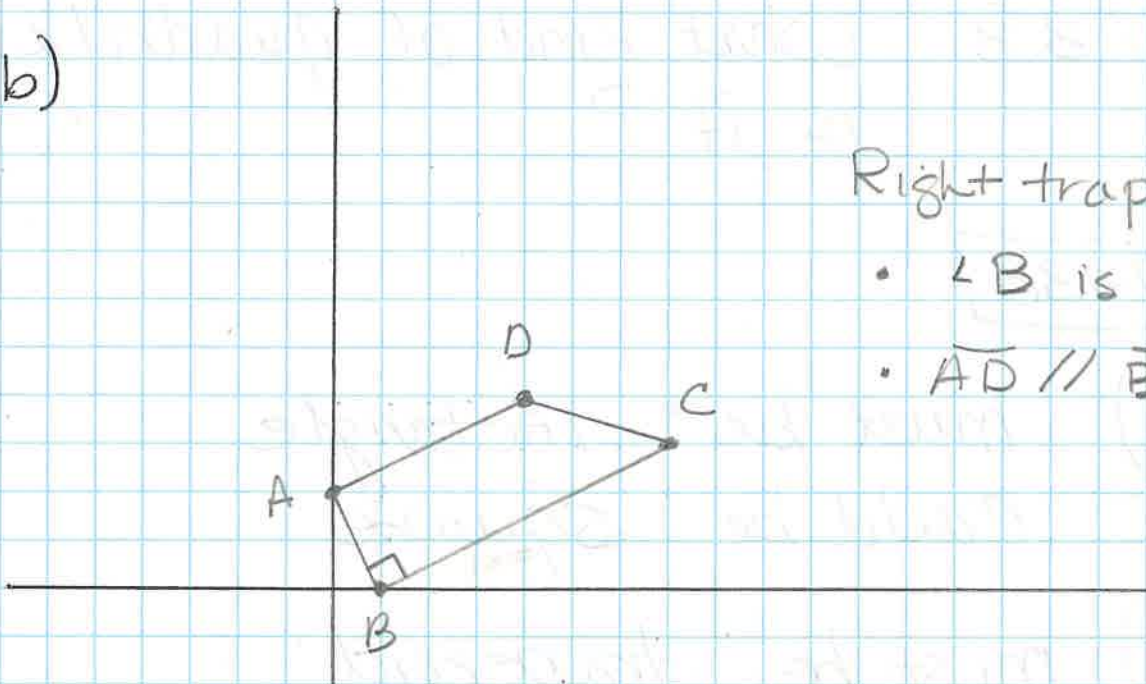
Rhombus

• opposite sides are \parallel

• all sides are =

(hypotenuses of Δ w/ legs 3 and 2)

b)



Right trapezoid

- $\angle B$ is 90°
- $\overline{AD} \parallel \overline{BC}$

$$m \text{ of } \overline{BC} \Rightarrow \frac{3}{6} = \frac{1}{2}$$

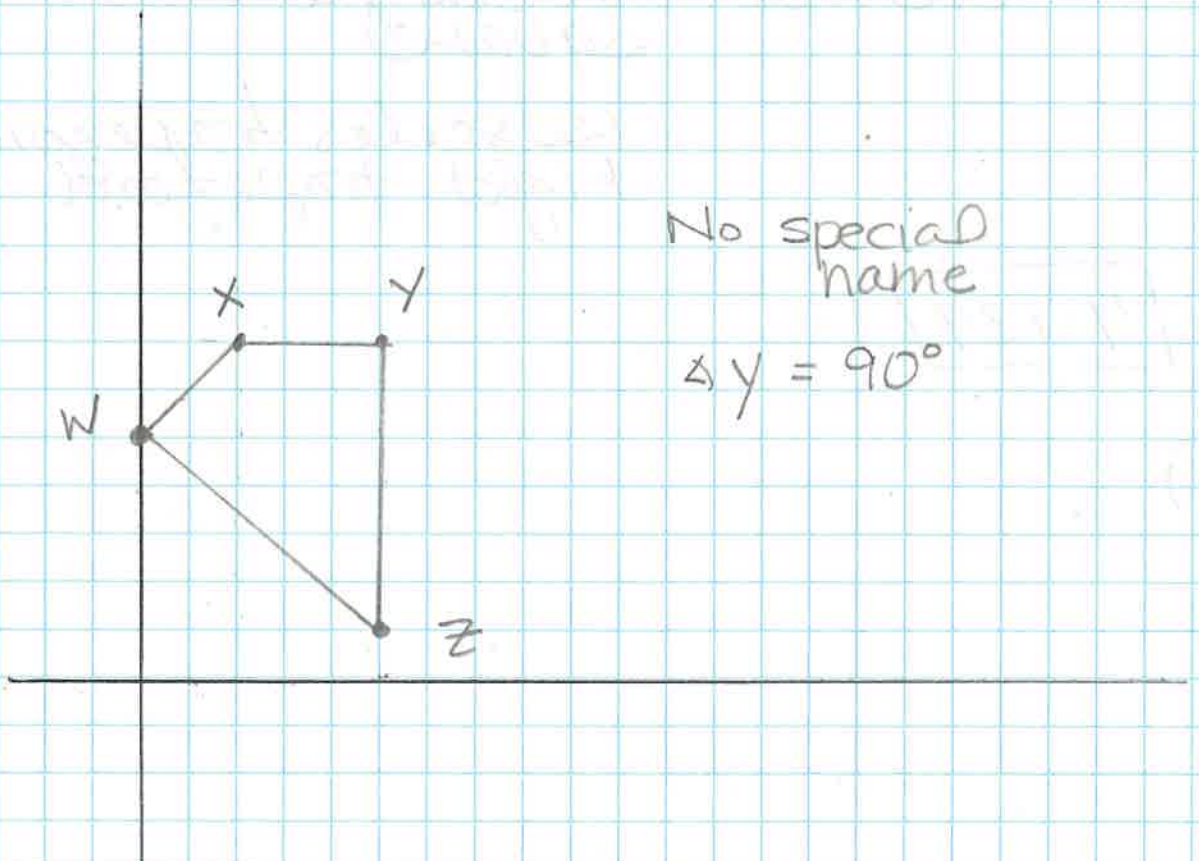
$$m \text{ of } \overline{AB} \Rightarrow \frac{2}{-1} = -2$$

} opp. reciprocals
so $\overline{BC} \perp \overline{AB}$

$$m \text{ of } \overline{AD} \Rightarrow \frac{2}{4} = \frac{1}{2}$$

$\overline{BC} \parallel \overline{AD}$

c)



No special name

$$\angle Y = 90^\circ$$