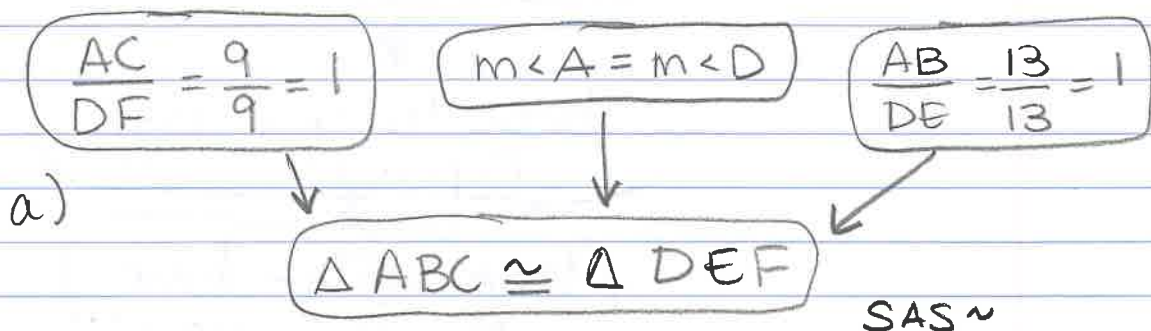


# homework 6-4 through 6-10

6-4

- a) alternate interior angles
- b) vertical angles
- c) u and z ; s and x ; v and w ; t and y

6-5



- b) yes, similar and common ratio is 1

6-6

$$3x + 1 + 52 = 180$$

$$3x + 53 = 180$$

$$3x = 127$$

$$x = 42\frac{1}{3}$$

6-7

a)  $x = 8 \text{ cm}$

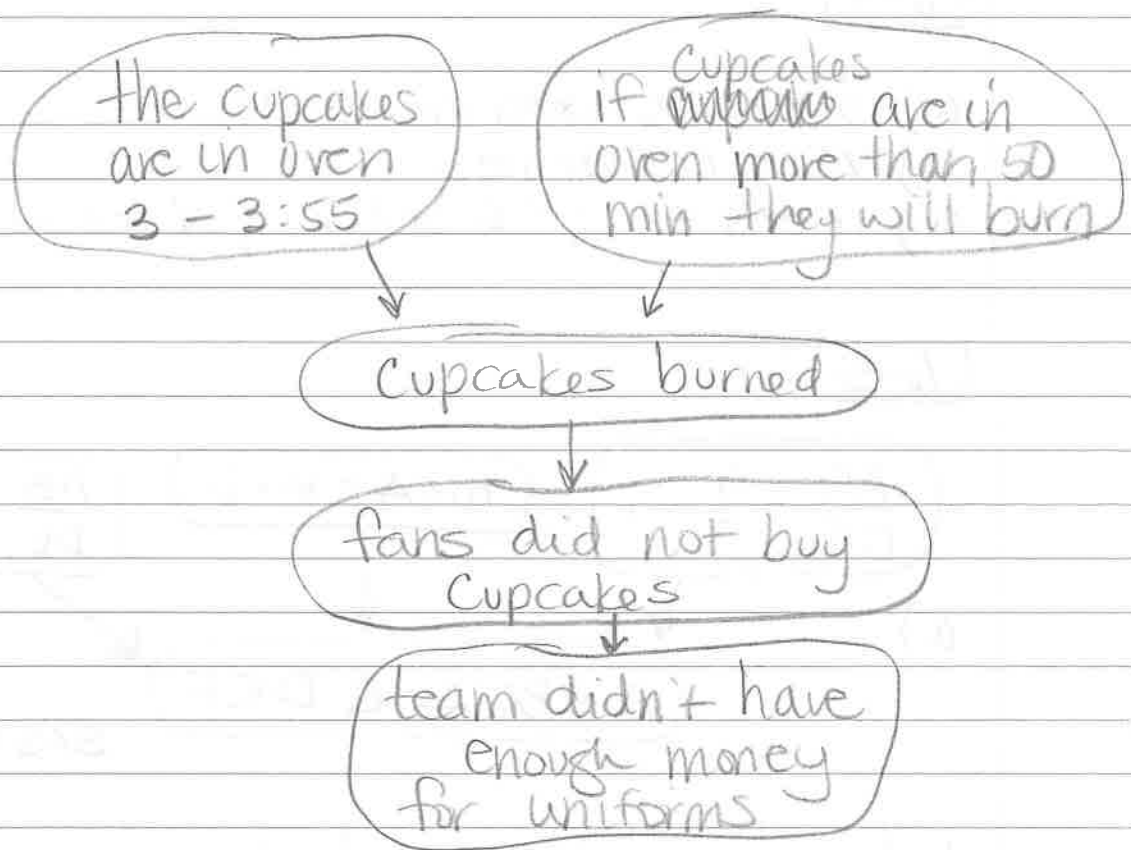
b)  $\tan 29 = \frac{x}{27}$

$$x \approx 14.97 \text{ ft}$$

c)  $16^2 - 5^2$

$$x \approx 15.2 \text{ in}$$

6-8



6-9

a)  $P(\text{female}) = 75\%$     b)  $P(\sigma^{\rightarrow} \text{ and not walk into sch})$   
 $= \frac{1}{4} \cdot \frac{3}{5} = \frac{3}{20} = 15\%$

c)  $P = (.40)(.60) = 1$     d) ~~union~~  
b - intersection  
c - union

6-10

